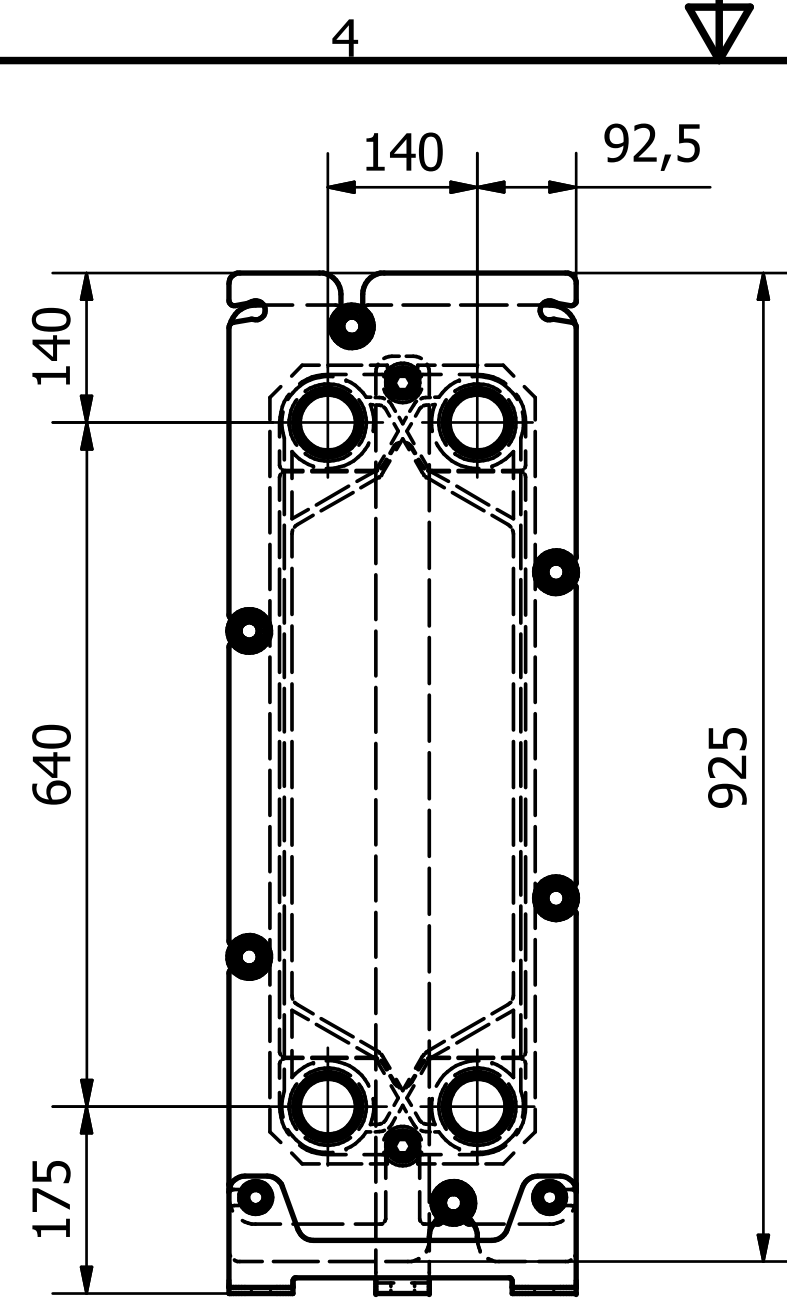
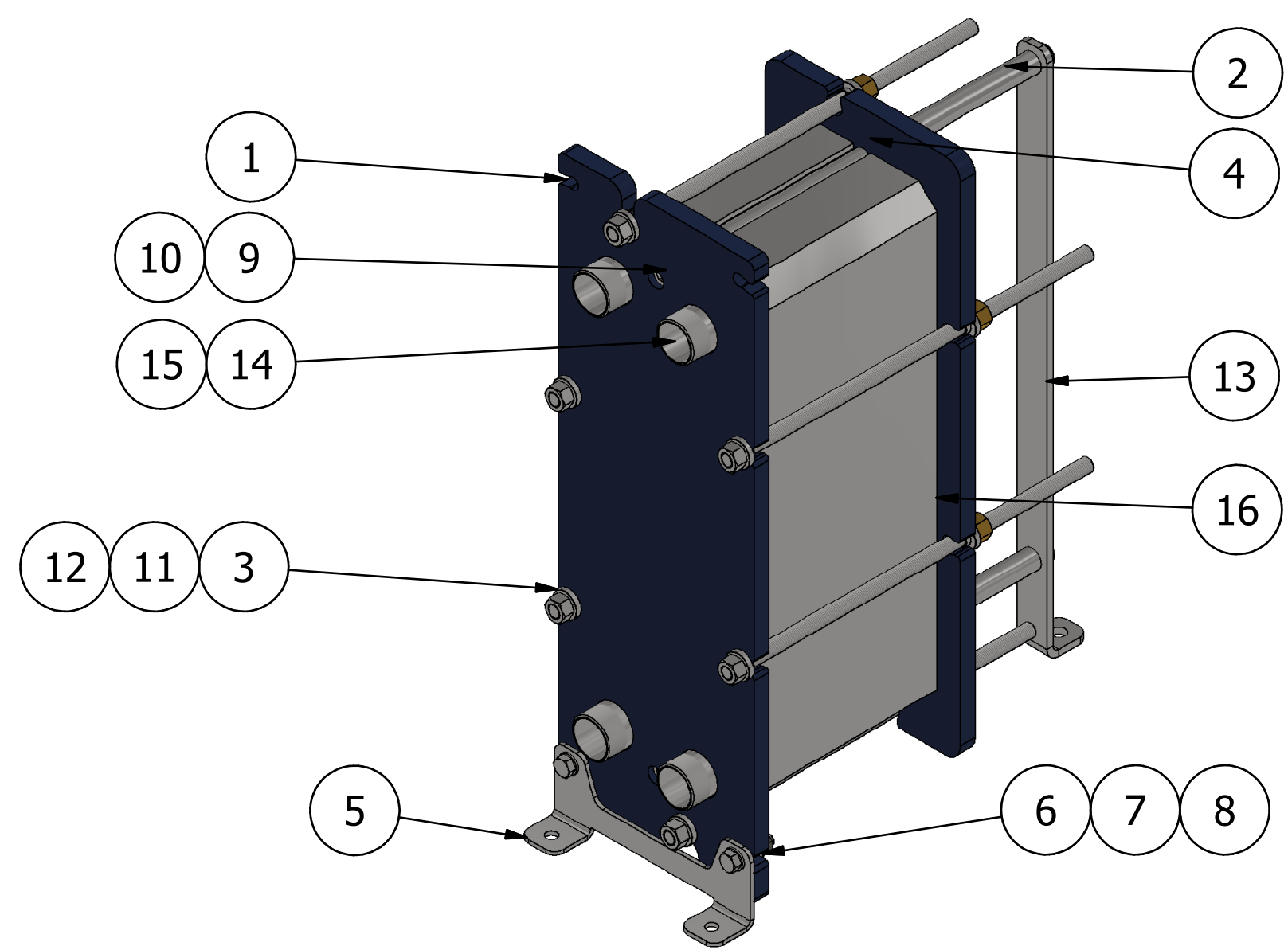


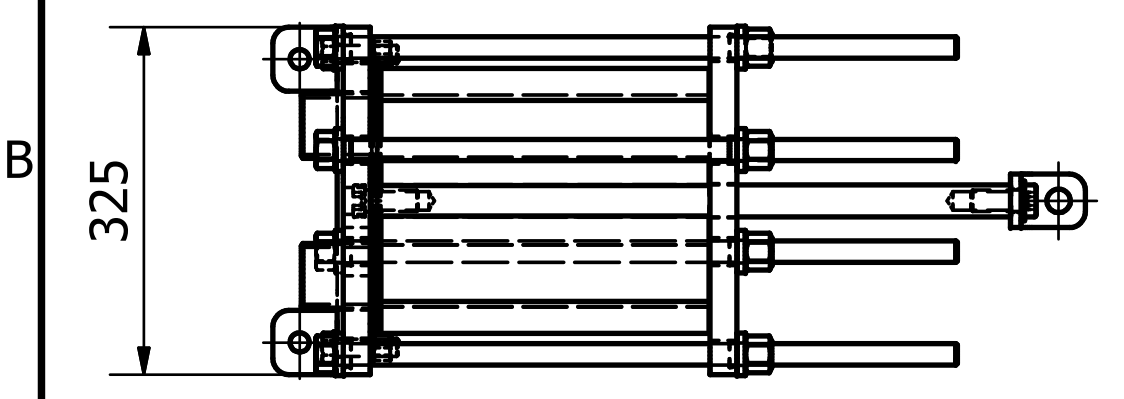
Side View



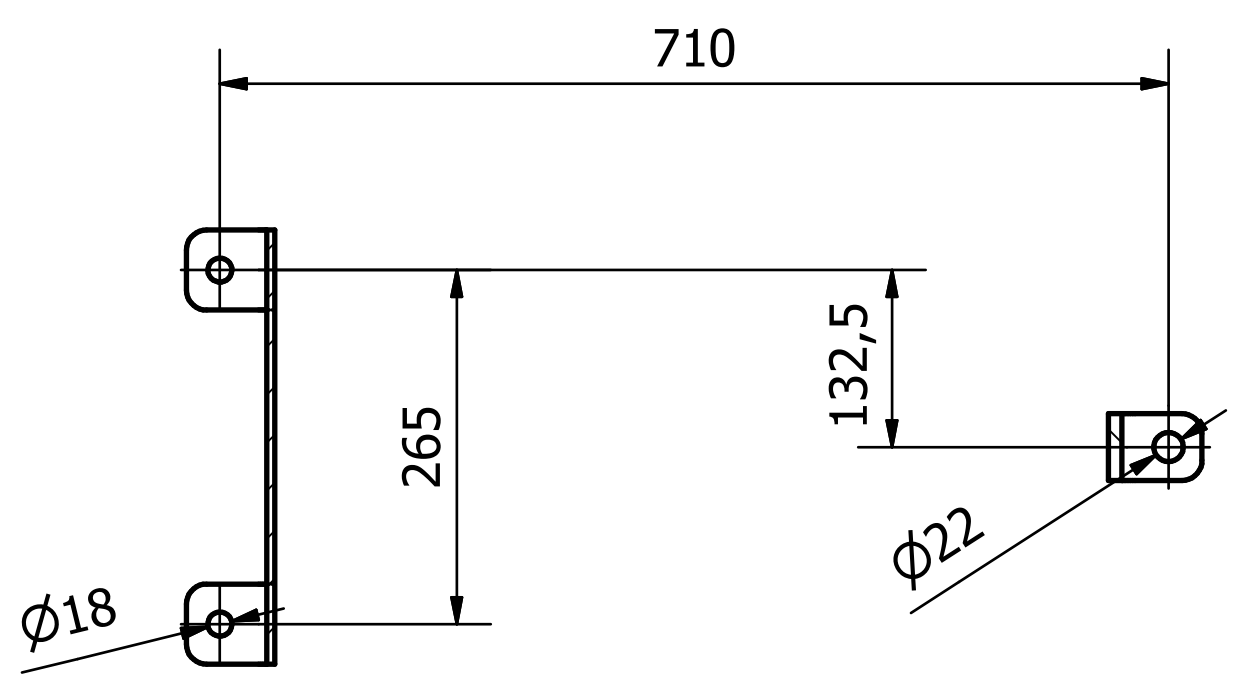
Front View



3D View



Top View



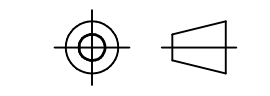
A-A ( 1 : 8 )

ITEM	QTY	DESCRIPTION	SIZE	MATERIAL	COMMENTS
16	90	M6 HX Plate	C-C 640x140 x 0.5 thk	SS 316L	
15	1	Middle spacer	Plate 602x230 x 3 thk	SS 316L	
14	2	Top/Bot Connection Spacer	Plate with NB 50 Nipples	SS 316L	AT-6-DT-002
13	1	Foot Mount Rear	Plate 930x50 x 10 thk	SS 304L	
12	6	Manufactured Hex Nut	M20 x 25 lg	Brass	
11	6	Manufactured Hex Bolt	M20 x 600 lg	SS 304L	
10	2	Washer	M20 Flat	SS 304L	
9	4	Allen Cap Screw	M20 x 50 lg	SS 304L	
8	2	Hex Bolt	M16 x 60 lg	SS 304L	
7	2	Hex Nut	M16	SS 304L	
6	4	Washer	M16 Flat	SS 304L	
5	1	Front Foot Mount	Plate 325x166 x 6 thk	SS 304L	
4	1	Pressure Plate	Plate 860x325 x 25 thk	Mild Steel	
3	12	M20 Step Washer	Ø40 x 15 lg	SS 304L	AT-6-DT-001
2	2	Guide Shaft	Ø30 Round x 600 lg	SS 304L	
1	1	Frame Plate	Plate 925x325 x 25 thk	Mild Steel	

BILL OF MATERIALS

REV	DESCRIPTION	DRAWN	CHECKED	APPROVED	DATE
0	FOR APPROVAL	JCB	DDB	DDB	

GENERAL ARRANGEMENT



A1

SCALE : 1:5

SUB CONTRACTOR DWG NO

CLIENT DWG NO

APEX DWG NO AT-6-GA-001

AT-6 PLATE AND FRAME  
HEAT EXCHANGER



Sheet	of	REV
Sheet	of	REV
Sheet 1	of 1	REV 0

This drawing is subject to return on demand and must not be copied or passed on to any third party; or used directly or indirectly for any other purpose that the design and construction to the order of APEX THERMAL